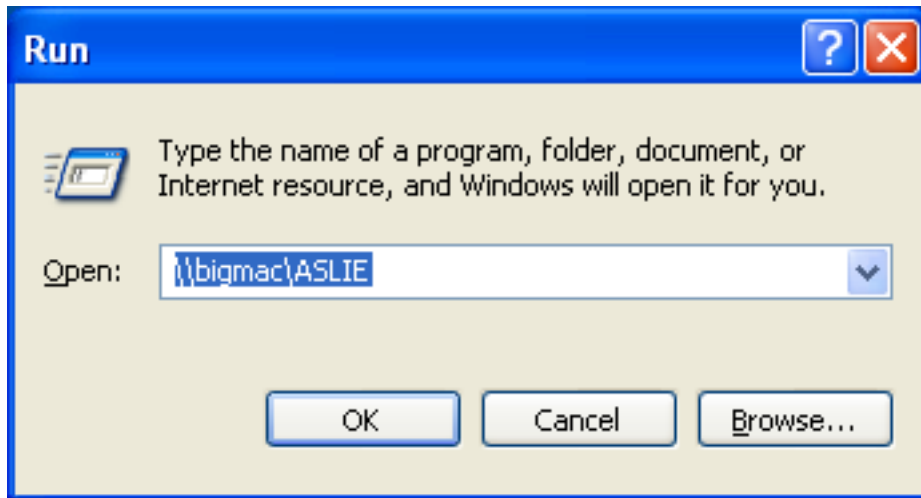


To login to BigMac from a PC, go to the Start Menu and select Run...

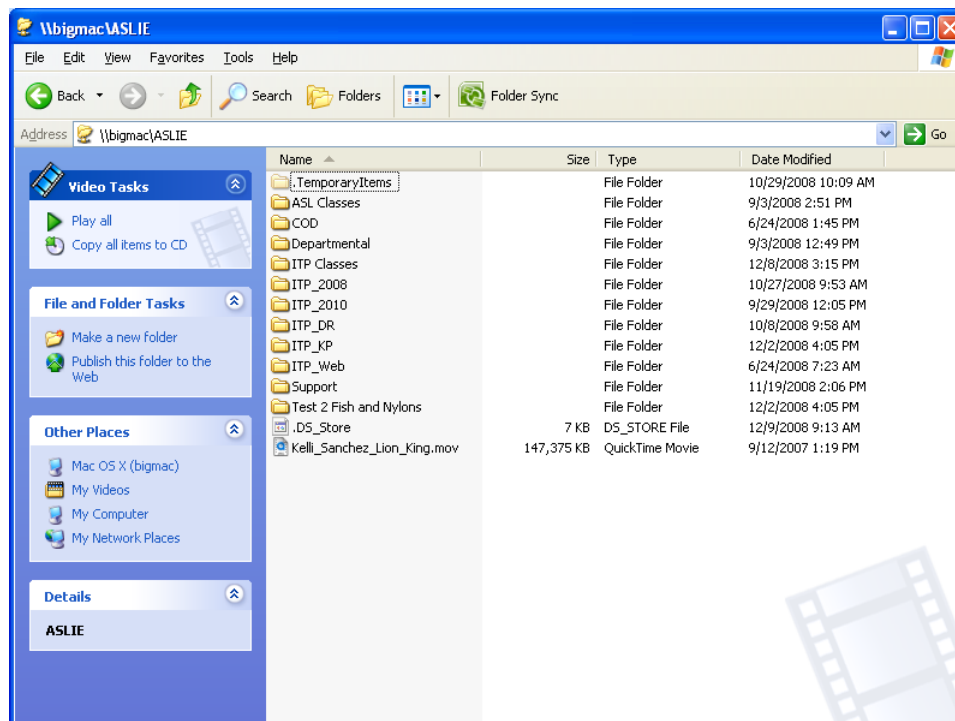
Enter the following into the Open: field as below (\\bigmac\ASLIE).

Click the OK button.



You will get a new window asking you to login. **YOUR BIGMAC LOGIN IS THE SAME AS YOUR ECU EMAIL USERNAME AND PASSWORD.**

In a few seconds, you should get the following window:



This is BigMac. Enjoy.